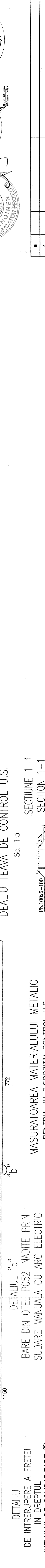
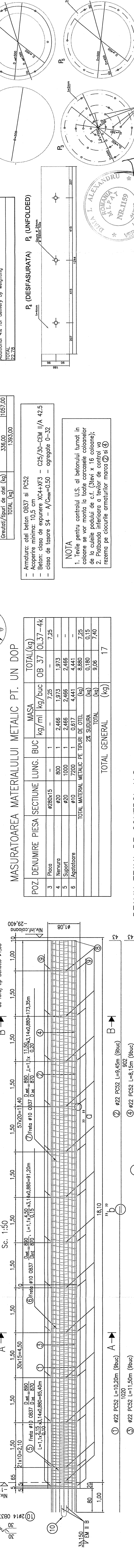
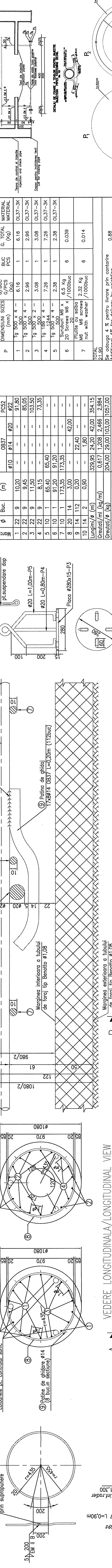


SECTIUNE A-A/SECTION A-A SECTIUNE B-B/SECTION B-B



MASURATOAREA MATERIALULUI METALIC PENTRU UN DISPOZITIV DE INJECTIE

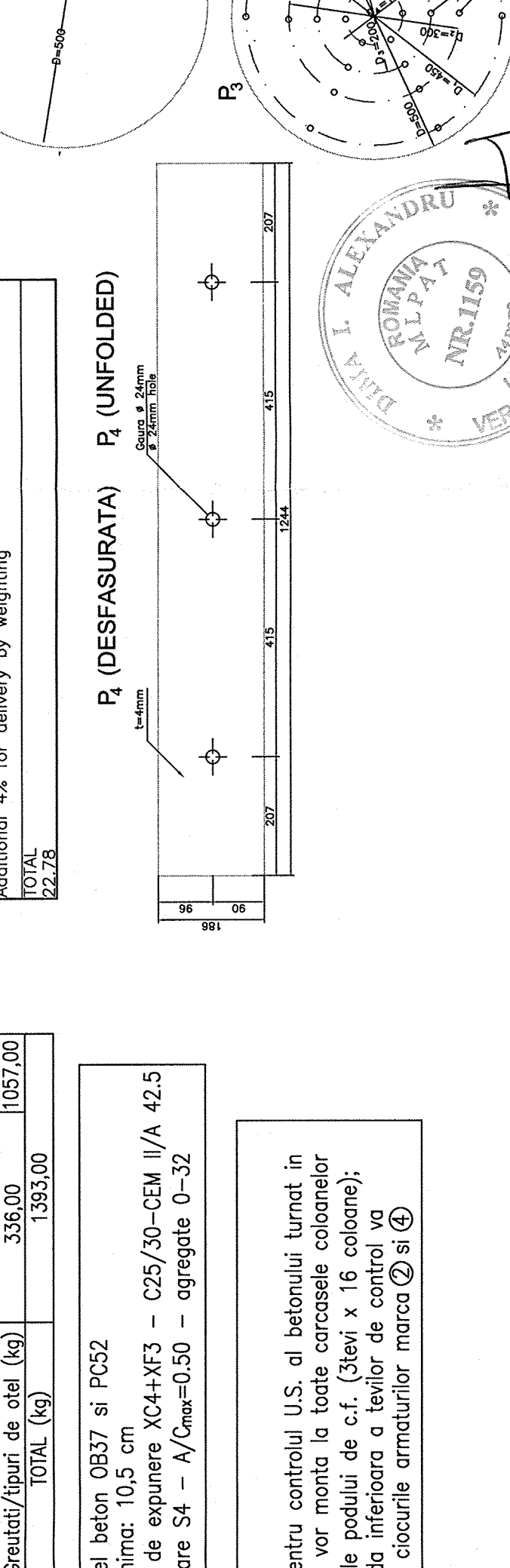
P	DIMENSIUNI (mm)	G/BUC (kg)	PCS	G. TOTAL (kg)
1	1g 500 x 4	6.16	1	6.16
2	1g 500 x 4	2.96	1	2.96
3	1g 500 x 2	3.08	1	3.08
4	1g 186 x 4	7.26	1	7.26
5	1g 500 x 4	2.38	1	2.38
6	20 Screws M6 x 1000buc	6.5 Kg	6	0.039
7	Piulițe cu sabla M6 M6 screws with washer /1000buc	2.32 Kg	6	0.014
TOTAL				21.90

Sc. adauga 4 % pentru livrare prim cantarire Additional 4% for delivery by weighing

TOTAL 22.78

EXTRAS DE ARMATURA PENTRU O COLOANA Lf=18,00m

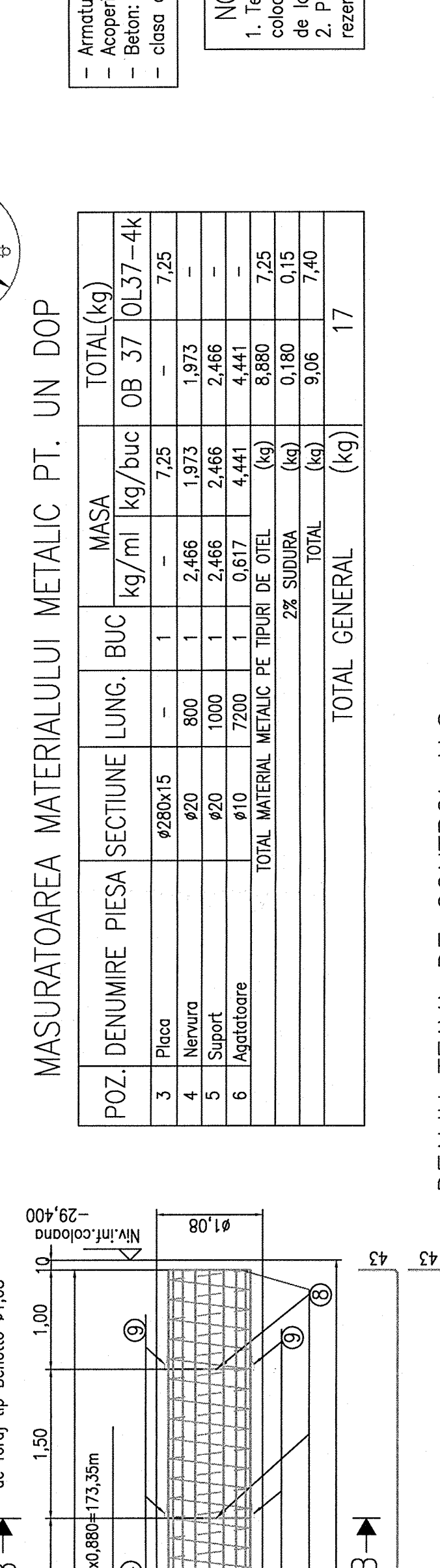
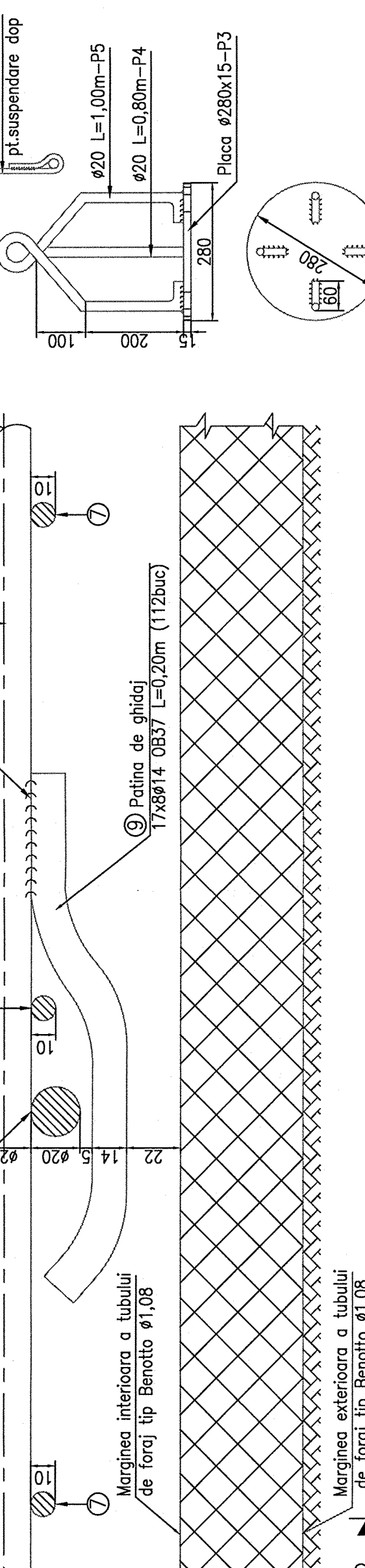
Poz.	Denumire	Lungimi (m)	Buc.	Lungimi pe diametru	
				Ø10	Ø14
1	Ø22	9	10,20	9,45	91,80
2	Ø22	9	11,50	-	85,05
3	Ø22	9	8,15	-	103,50
4	Ø10	1	65,40	-	73,35
5	Ø10	1	91,20	-	-
6	Ø10	1	173,35	-	-
7	Ø10	1	3,00	-	42,00
8	Ø10	2	0,90	-	1,80
9	Ø10	14	112	-	22,40
10	Ø10	2	0,90	-	1,80
Lungimi/Ø (m)					
Greutăți/ml (kg/m)					
Greutăți/Ø (kg)					
Greutăți/figură de oțel (kg)					
TOTAL (kg)					1393,00



MASURATOAREA MATERIALULUI METALIC PT. UN DOP

POZ.	DENUMIRE	PIESA	SECTIUNE	LUNG.	BUC	MASA (kg/ml)	kg/buc	TOTAL (kg)
3	Placa	Ø280x15	-	1	1	-	7,25	7,25
4	Nervura	Ø20	800	1	2,466	1,973	2,466	1,973
5	Support	Ø20	1000	1	2,466	2,466	2,466	2,466
6	Agatatoare	Ø10	7200	1	0,617	4,441	4,441	4,441
TOTAL MATERIAL METALIC PE TIPURI DE OTEL								8,880
2% SUDURA								0,180
TOTAL GENERAL								9,06
TOTAL GENERAL								17

DE ALIULU "a" PATINA DE GHIDARE



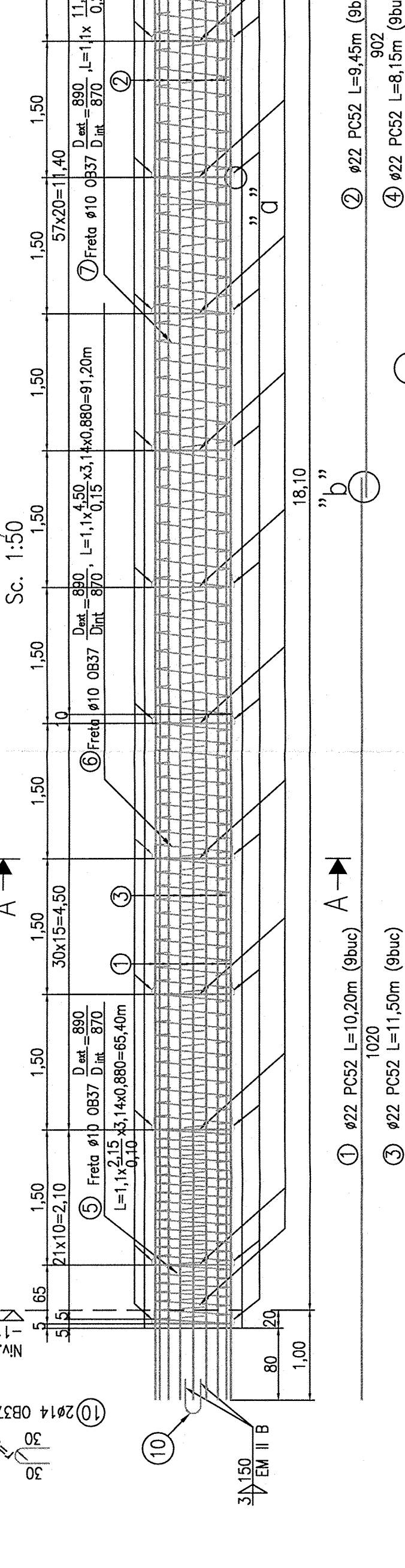
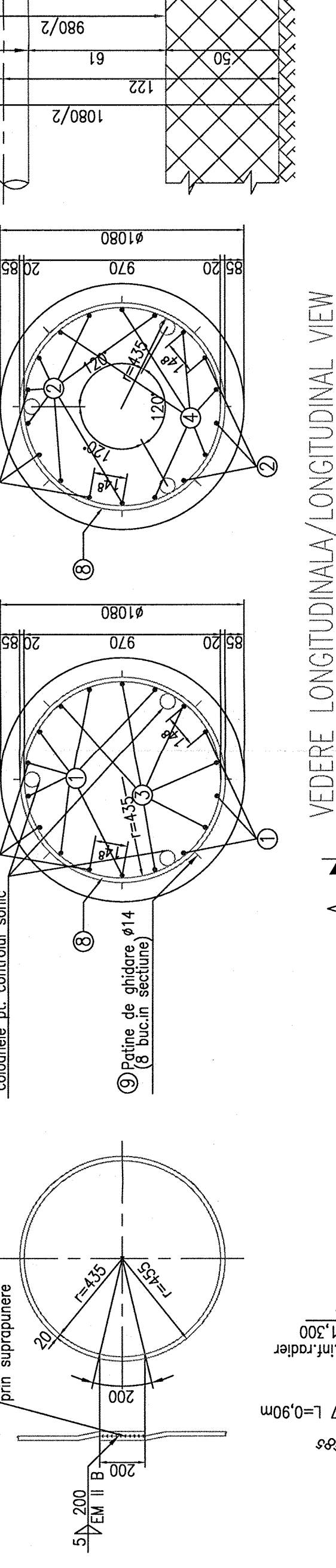
MASURATOAREA MATERIALULUI METALIC PENTRU UN DISPOZITIV DE INJECTIE

P	DIMENSIUNI (mm)	G/BUC (kg)	PCS	G. TOTAL (kg)
1	1g 500 x 4	6.16	1	6.16
2	1g 500 x 4	2.96	1	2.96
3	1g 500 x 2	3.08	1	3.08
4	1g 186 x 4	7.26	1	7.26
5	1g 500 x 4	2.38	1	2.38
6	20 Screws M6 x 1000buc	6.5 Kg	6	0.039
7	Piulițe cu sabla M6 M6 screws with washer /1000buc	2.32 Kg	6	0.014
TOTAL				21.90

Sc. adauga 4 % pentru livrare prim cantarire Additional 4% for delivery by weighing

TOTAL 22.78

DE ALIULU "b"



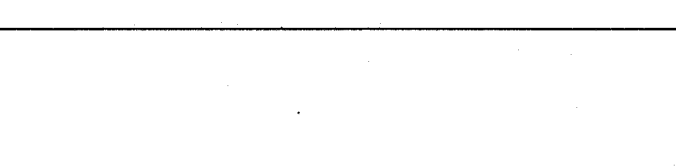
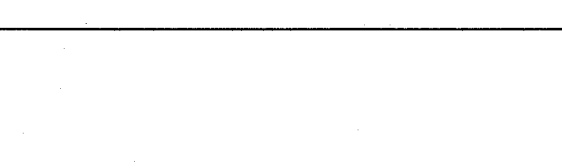
MASURATOAREA MATERIALULUI METALIC PENTRU UN DISPOZITIV DE INJECTIE

P	DIMENSIUNI (mm)	G/BUC (kg)	PCS	G. TOTAL (kg)
1	1g 500 x 4	6.16	1	6.16
2	1g 500 x 4	2.96	1	2.96
3	1g 500 x 2	3.08	1	3.08
4	1g 186 x 4	7.26	1	7.26
5	1g 500 x 4	2.38	1	2.38
6	20 Screws M6 x 1000buc	6.5 Kg	6	0.039
7	Piulițe cu sabla M6 M6 screws with washer /1000buc	2.32 Kg	6	0.014
TOTAL				21.90

Sc. adauga 4 % pentru livrare prim cantarire Additional 4% for delivery by weighing

TOTAL 22.78

DE ALIULU "b"



MASURATOAREA MATERIALULUI METALIC PENTRU UN DISPOZITIV DE INJECTIE

P	DIMENSIUNI (mm)	G/BUC (kg)	PCS	G. TOTAL (kg)
1	1g 500 x 4	6.16	1	6.16
2	1g 500 x 4	2.96	1	2.96
3	1g 500 x 2	3.08	1	3.08
4	1g 186 x 4	7.26	1	7.26
5	1g 500 x 4	2.38	1	2.38
6	20 Screws M6 x 1000buc	6.5 Kg	6	0.039
7	Piulițe cu sabla M6 M6 screws with washer /1000buc	2.32 Kg	6	0.014
TOTAL				21.90

Sc. adauga 4 % pentru livrare prim cantarire Additional 4% for delivery by weighing

TOTAL 22.78